



PARKING LOT REGULATIONS 7/1/2025 – 6/30/2026

PARKING RATES

The established parking fee for each entry is:

TYPE OF RATE	RATE
Standard Rate	\$25.00
Premium Rate	\$30.00
VIP Rate	\$35.00

We accept credit cards, debit cards, Apple Pay, and Google Pay at our location, cash is not accepted for payments.

GUESTS AND VISITORS

1. Please contact the Anaheim Convention Center (ACC) at 714.765.8950 for the current daily parking rate. Note that vehicles in excess of 19 feet in length will be charged twice the daily rate per entry and must be parked in designated spaces. Total length of vehicle cannot exceed 40 feet.
2. The ACC accepts the following forms of payment: **Master Card, Visa, American Express, Discover, Google Pay, and Apple Pay**
3. The parking fee is surrendered upon entering the parking lot and the parking receipt is not transferable.
4. The parking ticket is valid for one entry only and is not valid for in and out parking.
5. Speed limit is 5 m.p.h.
6. Please observe all overhead structure clearance signs.
7. Please park in marked parking spaces only (Anaheim Municipal Code 14.32.170).
8. Backing into parking spaces is not permitted (Anaheim Municipal Code 14.32.176).
9. Overnight parking of any vehicle is prohibited (Anaheim Municipal Code 14.32.220). Vehicles onsite at 2AM or an hour past the end of any event (the later of), may be subject to a citation.

CLIENTS AND EXHIBITORS

1. Please contact your Event Manager or Parking Management team to confirm the parking rate for your event.
2. Exhibitor parking fee will be the prevailing daily rate and will include unlimited in and out privileges through the West Street entrance ONLY. Parking and re-entry is provided on a space-as-available basis. Exhibitors must present their daily paid parking receipt AND their Exhibitor badge to the Parking Cashier in order to be granted re-entry.
3. The ACC accepts the following forms of payment: **Master Card, Visa, American Express, Discover, GooglePay, and ApplePay**
4. The parking fee is surrendered upon entering the parking lot and the parking receipt is not transferable.
5. Speed limit is 5 m.p.h.
6. Please observe all overhead structure clearance signs. Vehicles, displays, machinery, towed loads, advertisement, etc., parking in the parking lot to be used in conjunction with an event currently using the Anaheim Convention Center must have prior approval, and if permitted, will be required to pay rental space and/or parking fees as referred to in the contract.
7. Please park in marked parking spaces only (Anaheim Municipal Code 14.32.170).
8. Backing into parking spaces is not permitted (Anaheim Municipal Code 14.32.176).
9. Overnight parking of any vehicle is prohibited (Anaheim Municipal Code 14.32.220).
10. Perimeter security gates will be closed between 5pm – 8am on weekdays. Any requests for vehicle or truck entry before or after 5PM on weekdays and weekend needs must be made through special arrangements with the Parking team in advance.
11. Equipment storage of any kind, including but not limited to forklifts, high lifts, scissor lifts, electric carts, etc., must be stored in the crate storage area located east of Car Park #6 only. Equipment stored in unauthorized areas may be towed. The responsible party will also be liable for the payment of storage fees and the time spent by ACC personnel to research the status of the equipment. Time spent to make arrangements for equipment removal will also be calculated and included in the billing.
12. ALL staging, parking, and/or unloading/loading activities are prohibited on Hotel Way and Convention Way at all times.
13. All special requests regarding the aforementioned regulations must be submitted in writing to ACC Management and receive approval prior to the start of the event. Violations will result in citation and/or tow away.



ANAHEIM CONVENTION CENTER PARKING GUIDE MAP



DISNEY WAY

ACC Parking at
The Shops at
Anaheim
Gardenwalk



Hyatt House
Walgreens

Disney's
Toy Story
Parking



DLAND DRIVE

KATELLA AVE

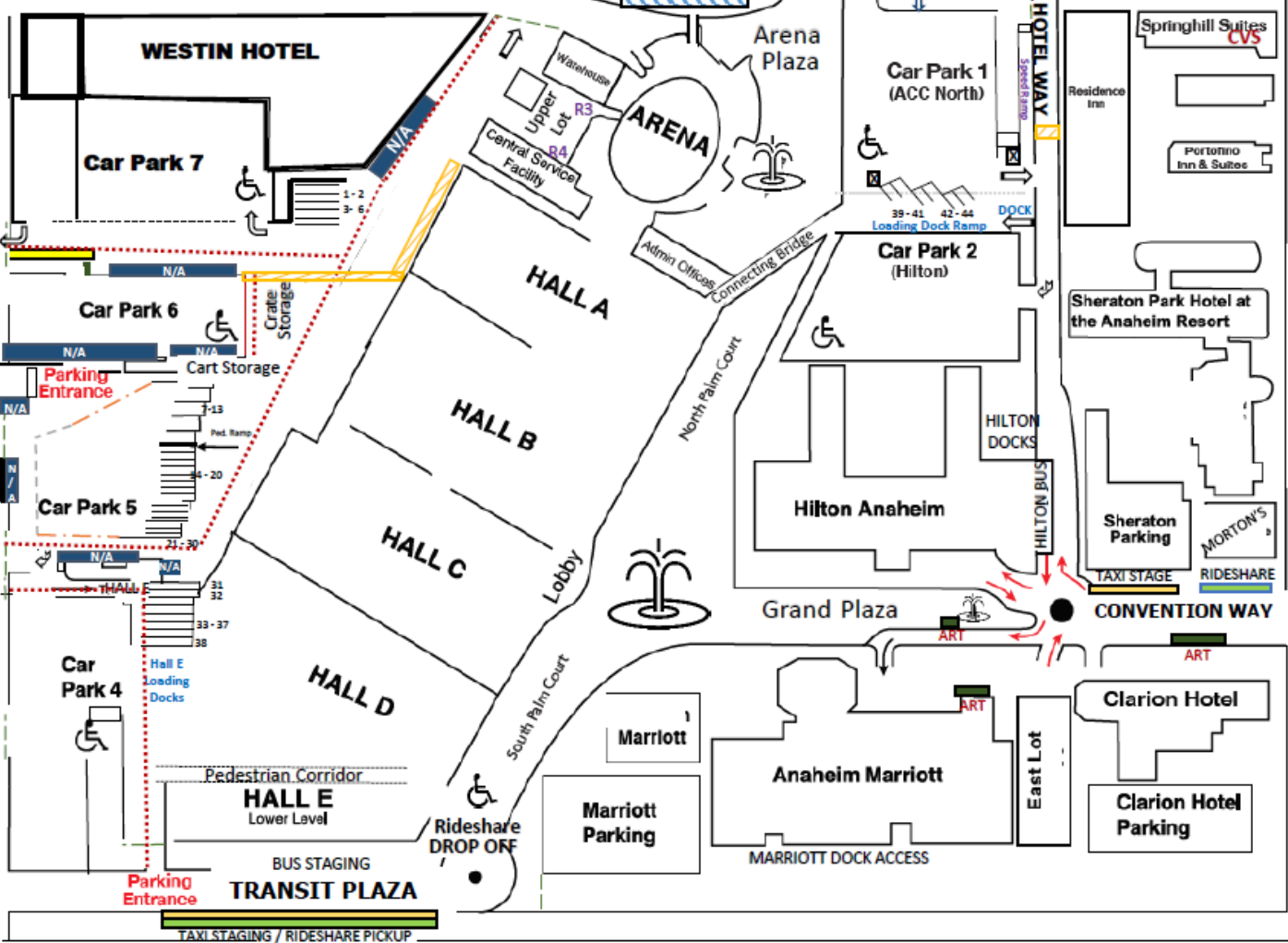
RIGHT TURN ONLY

Parking
Entrance

WEST STREET

WEST STREET

HARBOR BLVD



BUS STAGING
TRANSIT PLAZA
TAXI STAGING / RIDESHARE PICKUP

HOTEL WAY

HILTON BUS

CONVENTION WAY

Grand Plaza

MARRIOTT DOCK ACCESS

Springhill Suites
CVS
Residence Inn
Portofino Inn & Suites

DOCK

39-41 42-44
Loading Dock Ramp

DOCK

HILTON DOCKS

Sheraton Parking

TAXI STAGE

RIDESHARE

ART

ART

ART

ART

ART

ART

ART

ART

ART

ART

ART

ART

ART

ART

ART

ART

ART

ART