



City of
Hope®



**CITY OF HOPE
REFERRAL
GUIDE**



- City of Hope is an independent biomedical research institution and comprehensive cancer center committed to researching, treating and preventing cancer, with an equal commitment to curing and preventing diabetes and other life-threatening diseases. Our mission is to transform the future of health by turning science into practical benefit and hope into reality.
- In 2019, the Center for International Blood and Marrow Transplant Research once again reported that City of Hope had exceeded its predicted one-year survival rate for allogeneic transplants. City of Hope is the only transplant center in the United States with the distinction of achieving this standing for 15 consecutive reporting periods.
- City of Hope's Hematologic Malignancies and Stem Cell Transplantation Institute is one of the largest and most successful bone marrow and blood stem cell transplant centers in the U.S. Since the first bone marrow transplant in 1976, nearly 16,000 performed transplants have been completed for patients from virtually every state,



CITY OF HOPE IS RANKED THE BEST CANCER HOSPITAL IN CALIFORNIA AND THE WEST



- and around the world. As a pioneer in creating breakthrough treatments for all hematologic cancers and blood-related disorders, the Department of Hematology & Hematopoietic Cell Transplantation is a world leader in setting standards for stem cell transplantation and in improving long-term outcomes for both children and adults.
- City of Hope serves an area of Southern California that is home to more than 24 million people. We provide access through our main campus in Duarte, California, and 30 clinical network locations, which include community practice sites across the Southland. Greater expansion in 2020 and beyond will provide access for even more patients.

HOW TO REFER

As a National Cancer Institute-designated comprehensive cancer center, City of Hope is a recognized leader in innovative discoveries and novel treatments that have revolutionized the fields of cancer research, prevention, detection and care. This means your patient will be treated in accordance to the most up-to-date, evidence-based guidelines and have access to promising new therapies.

You may make a referral through any of the following options:

- Call (800) 826-HOPE (4673), Monday through Friday, 8 a.m. to 5 p.m. Pacific time, to speak with a patient referral specialist. After hours calls will be answered within one business day.
- Fax a referral request letter with a patient face sheet to (844) 264-4357.
- Complete a referral request for a patient appointment at [CityofHope.org/make-an-appointment](https://www.cityofhope.org/make-an-appointment).

The following information will be gathered at the time of referral.

PATIENT INFORMATION

- Name
- Address
- Date of birth
- Telephone number

CLINICAL INFORMATION

- Diagnosis
- Date of the diagnosis
- How the diagnosis was made
- What treatment the patient has undergone to date
- When this treatment was administered and completed
- Patient's current condition

INSURANCE INFORMATION

- Patient's insurance information

REFERRING PHYSICIAN INFORMATION

- Referring physician's organization name, office address, telephone numbers, fax numbers and email

City of Hope physicians keep in close touch with referring physicians to keep them fully apprised of the patient's care and treatment.



ONE OF THE U.S.'S
LARGEST AND MOST
SUCCESSFUL
STEM CELL
TRANSPLANT CENTERS

WHERE RECOGNITION MEETS CITY OF HOPE

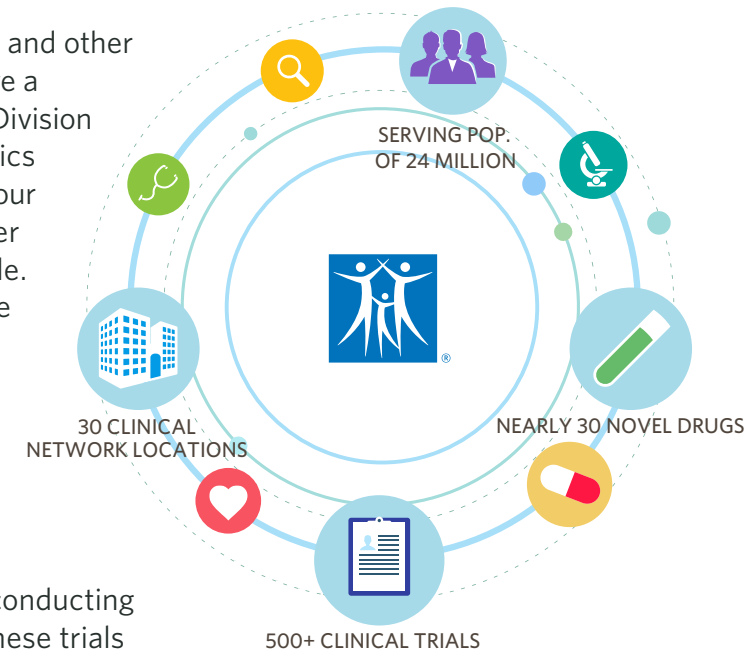
The American College of Surgeons Commission on Cancer acknowledged our exceptional level of cancer care by awarding City of Hope their highest level of accreditation, "Three-Years With Commendation." This is the second consecutive time that we've received this prestigious rating — surveys take place every three years.

City of Hope is recognized worldwide for our care and innovation. Our internationally recognized physicians take the time, along with our staff, to create an unparalleled patient experience.

WHERE INNOVATION MEETS HIGHER SURVIVAL RATES

Our dedication to innovative treatments and cures has continuously yielded results in what matters most — survival rates. A uniquely collaborative environment makes it easy for laboratory and clinical researchers at City of Hope to more quickly translate breakthroughs into therapies. Here are a few of City of Hope's innovations benefiting our patients and millions of cancer patients worldwide.

- Breast, ovarian, colorectal and other common cancers may have a hereditary basis, and the Division of Clinical Cancer Genomics at City of Hope can help your patient understand his/her personal cancer risk profile. We offer a comprehensive cancer risk assessment that takes into account a patient's family history and genetics, along with environmental and lifestyle factors.



- City of Hope is currently conducting over 500 clinical trials. These trials offer greater potential for patients to receive newly discovered treatments not available anywhere else.

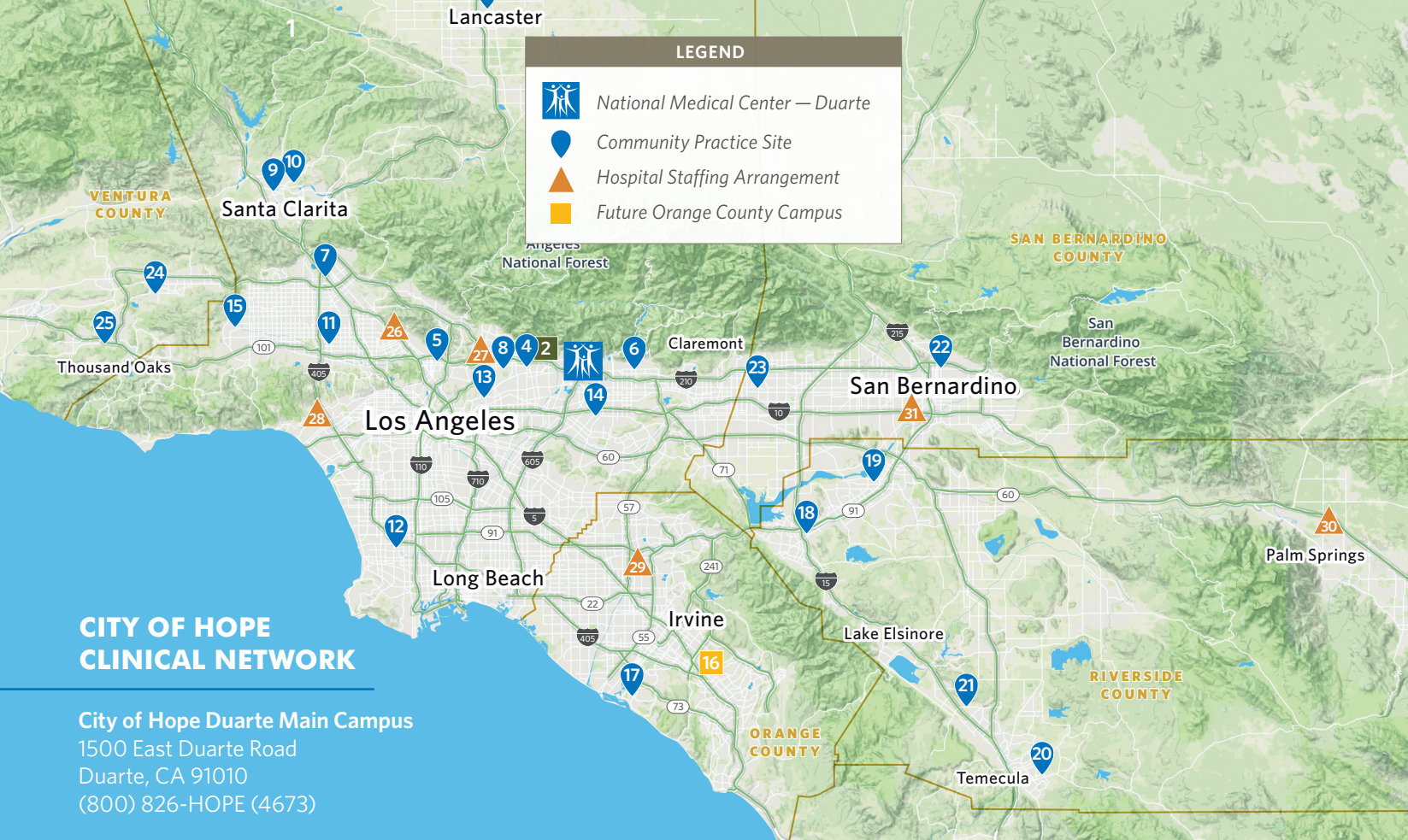
- We have nearly 30 novel drugs, biologicals and cell therapies in the pipeline. These numbers are exceptionally large for an organization of City of Hope's size, reflecting our commitment to innovation and speeding treatments to patients.

OUR SURGEONS
HAVE PERFORMED
MORE THAN

12,000

**ROBOTIC
PROCEDURES**

For more information on City of Hope's innovations, you can visit us online at CityofHope.org or call (800) 826-HOPE (4673).



CITY OF HOPE CLINICAL NETWORK

City of Hope Duarte Main Campus

1500 East Duarte Road
Duarte, CA 91010
(800) 826-HOPE (4673)

CITY OF HOPE NATIONAL MEDICAL CENTER HOSPITAL LOCATIONS

LOS ANGELES COUNTY



City of Hope

1500 East Duarte Road, Duarte, CA 91010
Phone: (800) 826-HOPE (4673) • Fax: (844) 264-4357

2 City of Hope | Arcadia Radiation Oncology

301 W. Huntington Drive, Suite 120, Arcadia, CA 91007
Phone: (626) 574-3657 • Fax: (626) 898-8016

CITY OF HOPE MEDICAL FOUNDATION PRACTICE SITES

LOS ANGELES COUNTY

3 City of Hope | Antelope Valley

44151 15th St. West, Lancaster, CA 93534
Phone: (661) 902-5600 • Fax: (844) 264-4357
Phone: (661) 902-5640 (Radiation Oncology only)
Fax: (661) 902-5638 (Radiation Oncology only)

4 City of Hope | Arcadia

301 W. Huntington Drive, Suite 400, Arcadia, CA 91007
Phone: (626) 218-9840 • Fax: (844) 264-4357

5 City of Hope | Glendale Radiation Oncology

720 E. Colorado St., Glendale, CA 91205
Phone: (818) 500-5885 • Fax: (818) 241-2946

6 City of Hope | Glendora

412 W. Carroll Ave., Suite 200, Glendora, CA 91741
Phone: (626) 218-0921 • Fax: (844) 264-4357

7 City of Hope | Mission Hills

15031 Rinaldi St., Mission Hills, CA 91345
Phone: (818) 660-4700 • Fax: (844) 264-4357
Phone: (818) 496-4410 • Fax: (818) 496-4758 (Radiation Oncology only)

8 City of Hope | Pasadena

630 S. Raymond Ave., Suite 220, Pasadena, CA 91105
Phone: (626) 218-9500 • Fax: (844) 264-4357

9 City of Hope | Santa Clarita

23823 Valencia Blvd., Suite 250, Santa Clarita, CA 91355
Phone: (661) 799-1999 • Fax: (844) 264-4357

10 City of Hope | Santa Clarita Radiation Oncology

25751 McBean Parkway, Suite 110, Valencia, CA 91355
Phone: (661) 259-2990 • Fax: (661) 259-1031

11 City of Hope | Sherman Oaks Radiation Oncology

5522 Sepulveda Blvd., Sherman Oaks, CA 91411
Phone: (818) 997-1522 • Fax: (818) 997-0705

12 City of Hope | South Bay

5215 Torrance Blvd., Torrance, CA 90503
Phone: (310) 750-1715
Fax: (424) 291-4440 (Medical Oncology only)
Fax: (310) 316-9370 (Radiation Oncology only)
Fax: (310) 939-0934 (Surgical Oncology only)

13 City of Hope | South Pasadena

209 Fair Oaks Ave., South Pasadena, CA 91030
Phone: (877) 998-7546 • Fax: (844) 264-4357
Phone: (626) 316-1488 (Radiation Oncology only)
Fax: (626) 799-2889 (Radiation Oncology only)

14 City of Hope | West Covina

1250 S. Sunset Ave., Suite 303, West Covina, CA 91790
Phone: (626) 856-5858 • Fax: (844) 264-4357

15 City of Hope | West Hills Radiation Oncology

7301 Medical Center Drive, Suite 100, West Hills, CA 91307
Phone: (818) 884-1683 • Fax: (818) 884-3861

ORANGE COUNTY

16 Future City of Hope Orange County Campus

15161 Alton Parkway Irvine, CA 92618
Opening 2021

17 City of Hope | Newport Beach

1601 Avocado Ave., Newport Beach, CA 92660
Phone: (949) 763-2204 • Fax: (949) 536-8036

RIVERSIDE COUNTY

18 City of Hope | Corona

1280 Corona Pointe Court, Suite 112, Corona, CA 92879
Phone: (951) 898-2828 • Fax: (844) 264-4357
Phone: (951) 898-2826 (Radiation Oncology only)
Fax: (951) 898-2811 (Radiation Oncology only)

19 City of Hope | Riverside Radiation Oncology

6939 Palm Court, Riverside, CA 92506
Phone: (951) 683-6771 • Fax: (951) 683-7450

20 City of Hope | Temecula Radiation Oncology

44274 George Cushman Court, Suite 100, Temecula, CA 92592
Phone: (951) 252-9300 • Fax: (951) 303-1800

21 City of Hope | Wildomar Radiation Oncology

36450 Inland Valley Drive, Suite 101, Wildomar, CA 92595
Phone: (951) 696-0679 • Fax: (951) 696-9748

SAN BERNARDINO COUNTY

22 City of Hope | San Bernardino Radiation Oncology

401 E. Highland Ave., Suite D, San Bernardino, CA 92404
Phone: (909) 475-2700 • Fax: (909) 475-2738

23 City of Hope | Upland

1100 San Bernardino Road, Suite 1100, Upland, CA 91786
Phone: (909) 949-2242 • Fax: (844) 264-4357
Fax: (909) 981-5783 (Radiation Oncology only)

VENTURA COUNTY

24 City of Hope | Simi Valley

1157 Swallow Lane, Simi Valley, CA 93065
Phone: (805) 527-2770 • Fax: (844) 264-4357

25 City of Hope | Thousand Oaks

425 Haaland Drive, Suite 101, Thousand Oaks, CA 91361
Phone: (805) 496-2949 • Fax: (844) 264-4357

CITY OF HOPE MEDICAL FOUNDATION STAFFING ARRANGEMENTS

LOS ANGELES COUNTY

26 Burbank (Providence Saint Joseph Medical Center) — Radiation Oncology only

181 S. Buena Vista St., First Floor, Burbank, CA 91505
Phone: (818) 847-3440 • Fax: (818) 847-3499

27 Pasadena (Huntington Hospital Cancer Center) — Radiation Oncology only

625 S. Fair Oaks Ave., Suite 100, Pasadena, CA 91105
Phone: (626) 397-5149 • Fax: (626) 397-2147

28 Santa Monica (Providence Saint John's Health Center) — Radiation Oncology only

2121 Santa Monica Blvd., Garden Level, Santa Monica, CA 90404
Phone: (310) 829-8913 • Fax: (310) 315-6168

ORANGE COUNTY

29 Orange (St. Joseph Hospital of Orange) — Radiation Oncology only

1010 W. La Veta Ave., Orange, CA 92868
Phone: (714) 734-6250 • Fax: (714) 734-6251

RIVERSIDE COUNTY

30 Palm Springs (Desert Regional Medical Center) — Gynecological Oncology only

1180 N. Indian Canyon Drive, Suite E-218, Palm Springs, CA 92262
Phone: (760) 416-4832 • Fax: (760) 416-4825

SAN BERNARDINO COUNTY

31 Colton (Arrowhead Regional Medical Center) — Medical Oncology only

400 N. Pepper Ave., Colton, CA 92324
Phone: (909) 580-2775 • Fax: (909) 387-0760

CONTACT US

PATIENT REFERRAL SERVICES

(800) 264-4377 (U.S. only)

(+1) (800) 264-4377 (International)

Email: physicianrelations@coh.org



REFERRING PHYSICIAN SPECIALISTS

The physician liaison program at City of Hope is designed to provide valuable customer service to referring physicians and their staff, and to increase physician satisfaction. We connect referring physicians with our specialty services and advanced oncology care across the clinical enterprise.

CLINICAL TRIALS

There are hundreds of clinical trials currently available at City of Hope. We help identify the appropriate research staff to discuss clinical trials and eligibility criteria specific to the patient. For all CART inquiries (patient, physician, clinical trials), contact **(833) 310-CART (2278)**.

For all other clinical trials, contact **(626) 218-1133**.

Over 100 Years of Innovative Treatment and Care

A cancer diagnosis is life-changing. If you or a loved one has recently been diagnosed with cancer, make City of Hope your first choice. We offer the world's leading oncologists, unparalleled care and the most innovative treatments for even the most challenging-to-treat cases.



City of
Hope®

CityofHope.org